

Instrument Enclosures

Comprehensive Scope Development, Design and Fabrication

OUR STRENGTHS

Chemical Dosing
Integrated Controls
System Design
Systems Integration
Application Knowledge
Quality Engineering
Nimble Flexibility
Customer Service
Field Service

WE DELIVER

Custom Systems
Standard Systems
Metering Pumps
Controls
Instrumentation
Accessories

MARKETS SERVED

Municipal
Industrial
Commercial

APPLICATIONS

Cooling
Boiler
Process
Potable
Waste Water

End users, engineers, and contractors are collectively moving towards a preference for fully integrated instrument enclosures to meet essential application requirements.

This increases the cost and complexity of the integrating the package on site and can make set up and start up of the system a frustrating hassle.

Instrument Associates provides a proven process that eliminates the hassles and incorporates proven field knowledge gained from operators into a well documented design for procurement and fabrication.

This process provides a single point of responsibility for the coordination of the multiple suppliers that contribute to a successful instrument design and installation.

Integration of instruments, fittings, enclosures, environmental conditioning, and electrical design and integration is typically not the expertise of any of the component suppliers.

Without thoughtful planning and consideration for how all the moving parts will fit together as well as how this part of the scope fits in the overall program of your construction or modernization project, there is no doubt that the project will have added costs or delays.

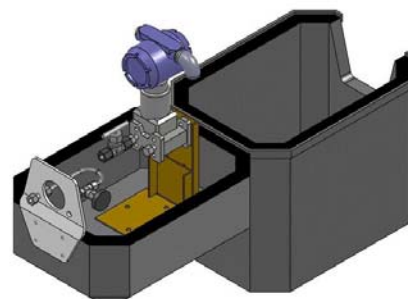
Single point of responsibility puts you in control without the added effort of coordinating all of the players. Instrument Associates routinely manages multiple design custom projects for a broad base of customers and applications.

You can be confident in the program we develop with you will be delivered when promised.

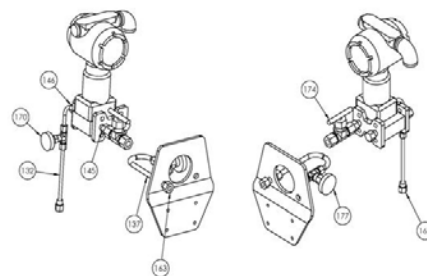
The majority of the projects we are awarded come from those who have attempted to do this type of work in house because they believe it will be less expensive.

Our customers tell us that that is just not the case. This type of work often gets lost in the shuffle and details are not properly considered. Field technicians are then tasked with the hassle of how to make it work and the work suddenly appears on the critical path to completion.

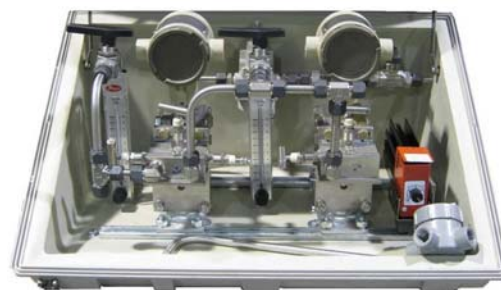
Instrument Associates is an ISO 9001: 2008 registered company and UL 508 shop.



Parametric 3D Modeling
(Pressure Transmitter Assembly in enclosure)



Detailed Assembly Drawings



Quality Design Layouts and Manufacturing
(Pressure Transmitter Assembly)



**Instrument Associates
Inc.**

4839 W. 138th Place
Alsip, IL. 60803

Phone: 708-597-9880
Fax : 708-597-1608

Instrument Associates as your Instrument Enclosure fabricator and project coordinator is good business.



www.instrumentassociates.com